



# GMT MONTHLY MEMBERSHIP PROGRESS REPORT

Results as of: 5/31/2020

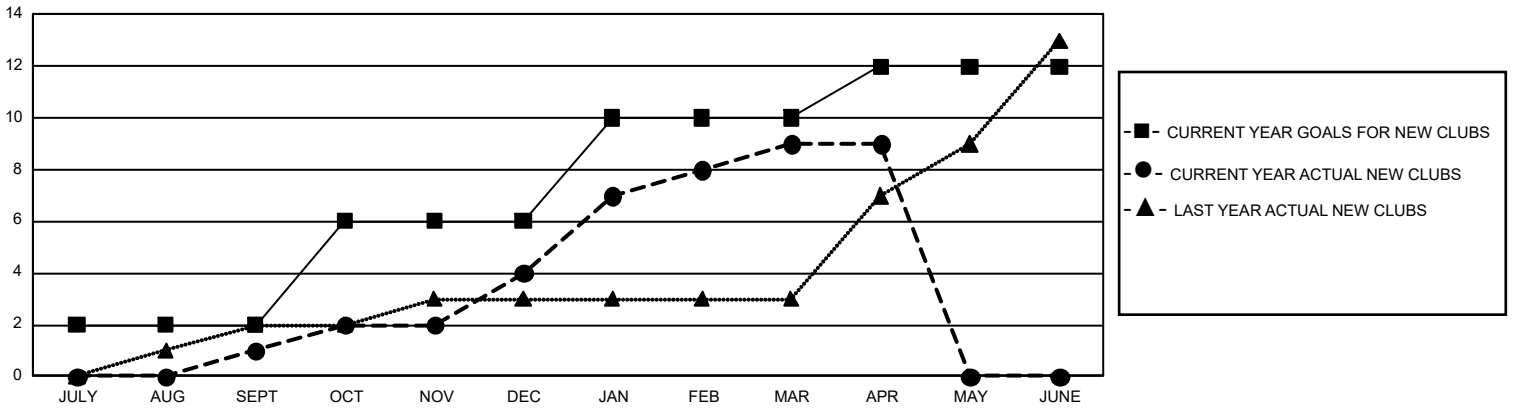
## GMT Constitutional Area 4, Group C

GMT: OPEN

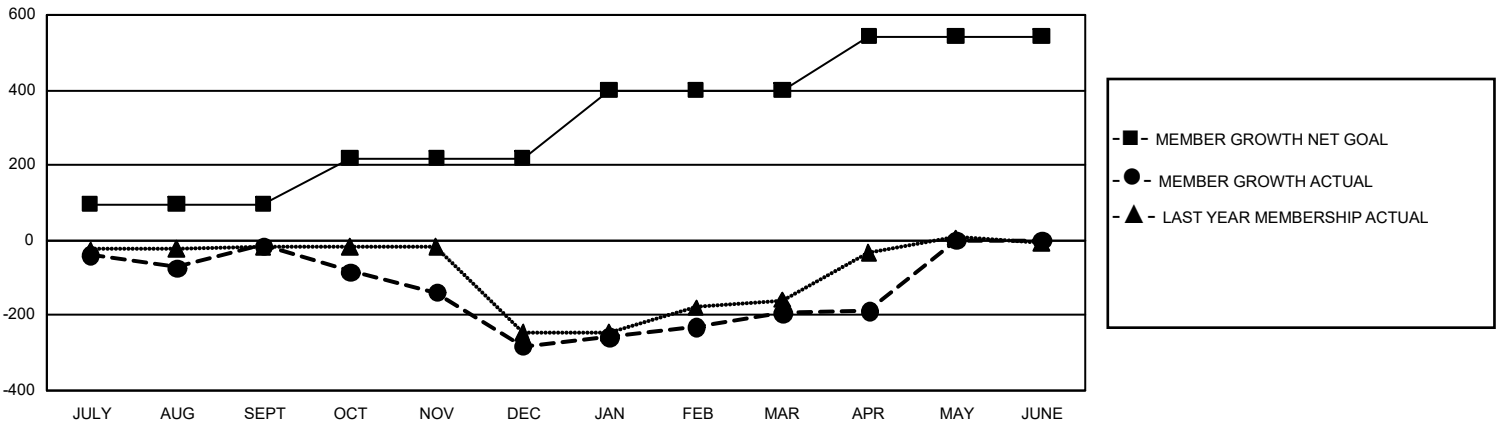
REPORT DOES NOT INCLUDE CLUBS IN UNDISTRICTED AREAS.

Clubs				Members			
RESULTS FOR 2019-2020				RESULTS FOR 2019-2020			
QUARTER	NEW CLUB GOAL	NEW CLUBS	DROPPED CLUBS	QUARTER	MEMBER GROWTH NET GOAL	MEMBER GROWTH ACTUAL	DROPPED MEMBERS ACTUAL (including transfers)
JULY/AUG/SEPT	6	1	3	JULY/AUG/SEPT	288	151	149
OCT/NOV/DEC	12	3	9	OCT/NOV/DEC	366	181	440
JAN/FEB/MAR	12	5	0	JAN/FEB/MAR	543	282	182
APR/MAY/JUNE	6	0	0	APR/MAY/JUNE	435	47	32

**GOALS AND ACTUAL NEW CLUBS CUMULATIVE**



**GOALS AND ACTUAL MEMBERS CUMULATIVE**



DROPPED CLUBS: 12	155 CLUBS OF 437 ADDED 1 OR MORE NEW MEMBERS	<b>GENDER DISTRIBUTION</b> MALE 4,957 (57.68%) FEMALE 3,637 (42.32%)
<b>DROPPED MEMBERS</b> DECEASED 21 CLUB CANCELLED 115 OTHER 666 <b>TOTAL 802</b>	<a href="#">CLICK HERE FOR CUMULATIVE MEMBERSHIP DATA</a>	TOTAL FAMILY UNIT MEMBERS 722 FAMILY MEMBERS PAYING HALF DUES 375